

# Testing LDAP settings

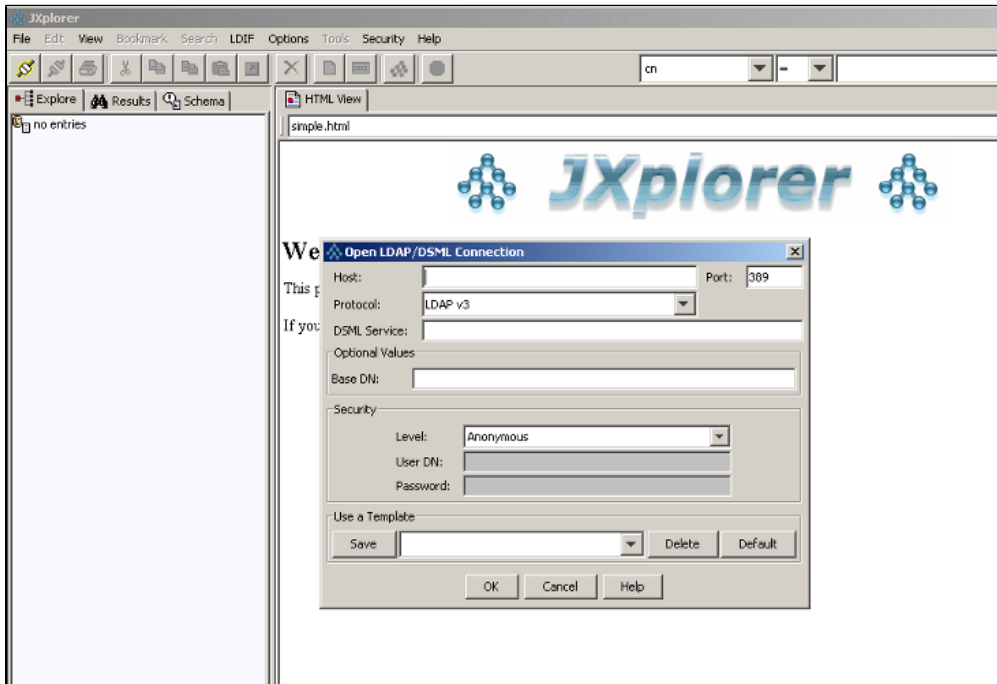
*The information on this page refers to License Statistics v6.0 and newer, which introduced a new user interface (UI).*

After you have [set up an LDAP connection](#), you should test your LDAP settings to ensure everything is working properly.

A tool such as [JXplorer](#) is an excellent way to test your LDAP settings. Using such a tool can save a lot of time when configuring License Statistics, because you can test that credentials and other settings are correct.

You can use [JXplorer](#) to copy the DN from LDAP. To do this:

1. Log into JXplorer as shown below.



2. After logging into JXplorer, use the Copy DN option to copy the base DN. When selecting the base DN, it's important to choose the path in the tree that contains the groups you want to see in License Statistics for reporting usage.

