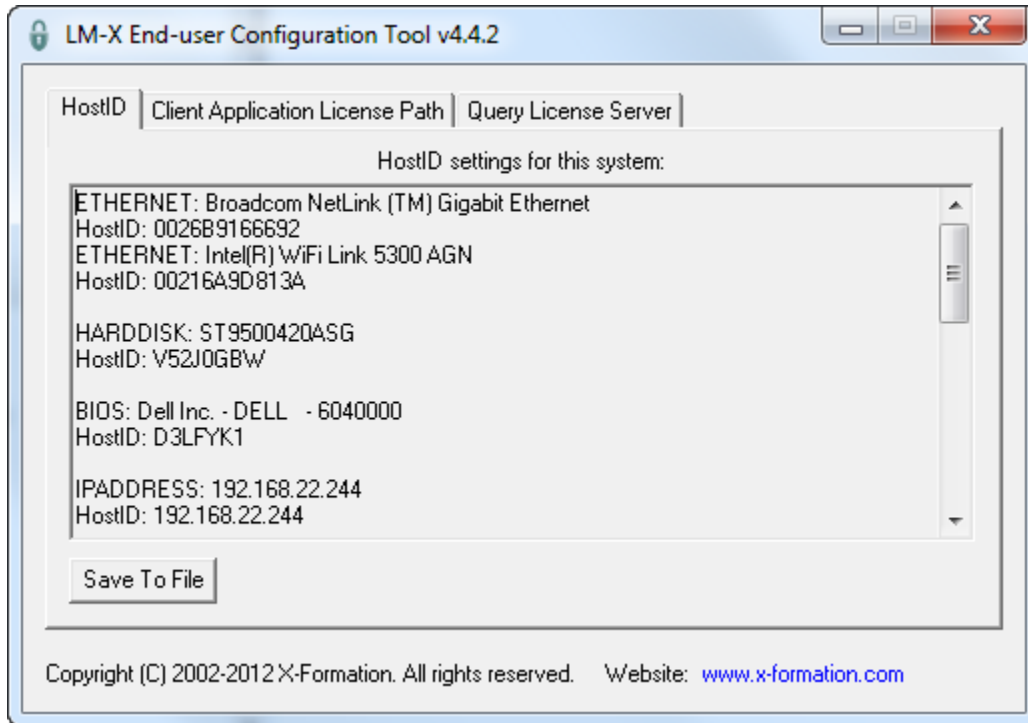


# LM-X End-user Configuration Tool

The End-user Configuration Tool is a Windows-only tool that lets you:

- See the HostID values of your computer system (in the HostID tab as shown in the example below)
- Edit the license path environment variable (see [Adding or removing license files from the path using the LM-X End-user Configuration tool](#) for more information)
- Query a license server



**Note:** After making changes to the license path, reboot to ensure that the changes take effect.